

# LRRB Annual Update

Michael Marti, PE  
SRF Consulting



# LRRB Key Facts



**\$4**  
Million

IN ANNUAL  
FUNDING



**25+**

NEW PROJECTS  
EACH YEAR



**75+**

ACTIVE  
PROJECTS



**12 CITY/COUNTY  
BOARD MEMBERS**



**100+ TAP CITY/  
COUNTY MEMBERS**



**LRRB**  
LOCAL  
ROAD RESEARCH  
BOARD

# **MN Rules 8820.3200**

## **LOCAL ROAD RESEARCH BOARD.**

### **Subpart 1. Appointment.**

The commissioner shall appoint a local road research board consisting of the following members:

- A. four county highway engineers,
- B. two city engineers
- C. two Department of Transportation staff engineers
- D. one University of Minnesota representative; and
- E. one ex officio secretary, who must be the department's research coordination engineer.

### **Subpart 2. Terms.**

Appointments of county highway and city engineers are for four years.



# Who is the Local Road Research Board?



**Lon Aune (Chair)**  
Marshall County



**Kristine Elwood**  
MnDOT State Aid



**Brian Giese**  
Pope County



**Duane Hill**  
MnDOT D1



**Katie Walker**  
MnDOT R&I



**Matt Leonard**  
City of Monticello



**Kyle Shelton**  
MnDOT R&I



**Andrew Witter**  
Sherburne County



**Mark Ray**  
City of Burnsville



**Wayne Sandberg**  
Washington County

# Who is the Research Implementation Committee?



**Will Manchester (Chair)**  
City of Minnetonka



**Darrick Anderson**  
Cass County



**Brian Giese**  
Pope County



**Aaron Holmbeck**  
Nobles County



**Ryan Thilges**  
Blue Earth County



**Matt Wegwerth**  
City of Grant Rapids



**Ted Schoenecker**  
MnDOT State Aid



**Fausto Cabral**  
MnDOT D1



**Ben Worel**  
MnDOT Road Research

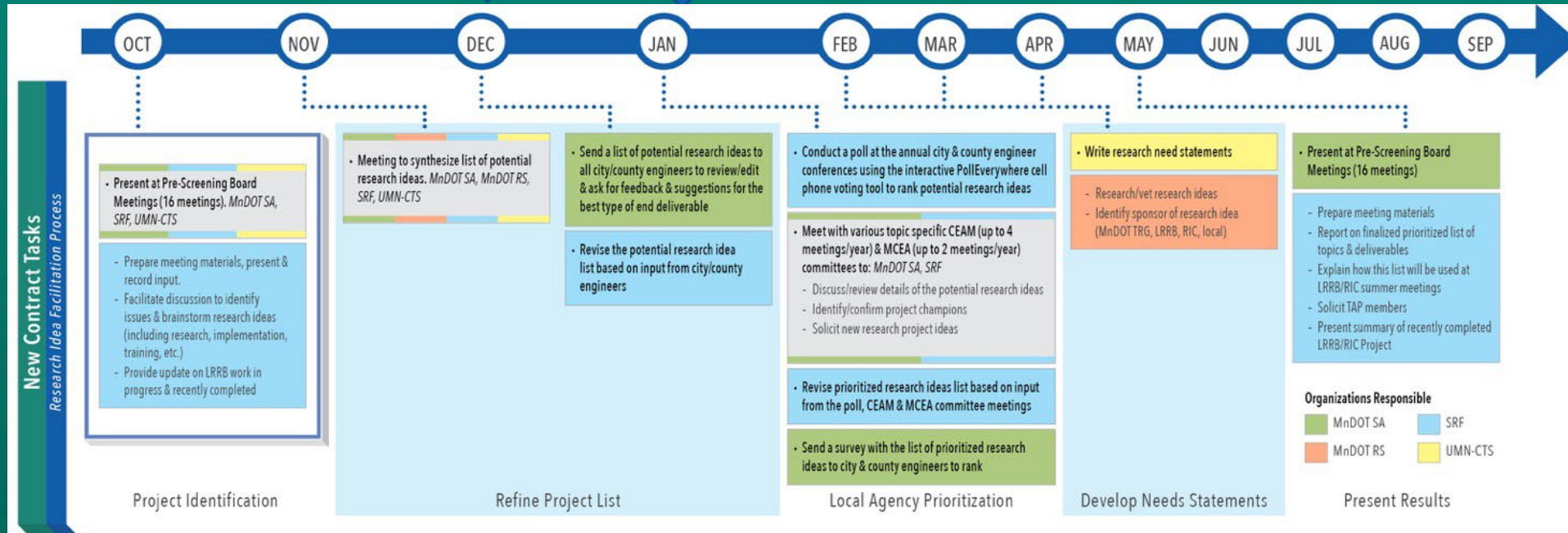
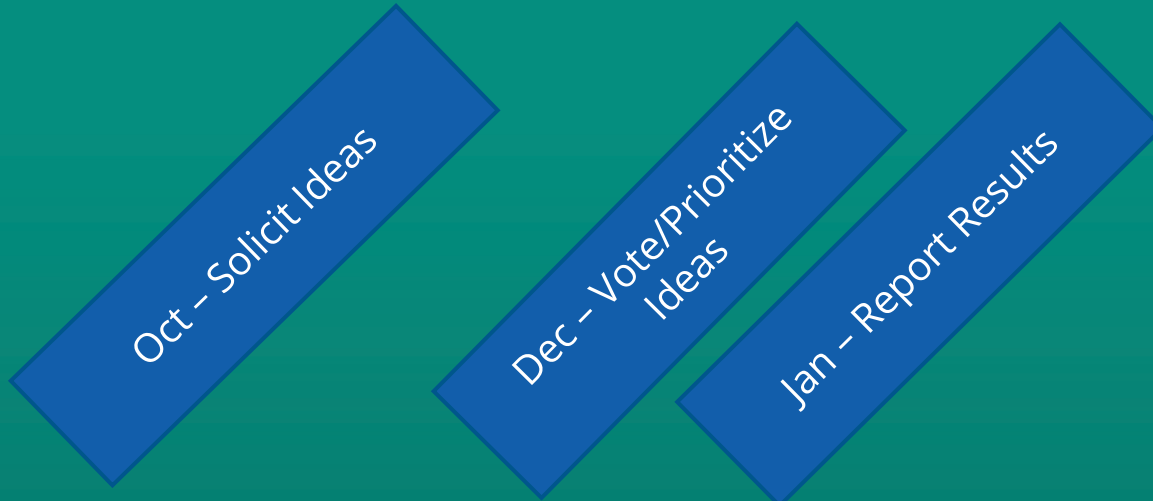


**Mindy Carlson**  
U of M CTS



# Status of LRRB New Ideas

# The Research Process



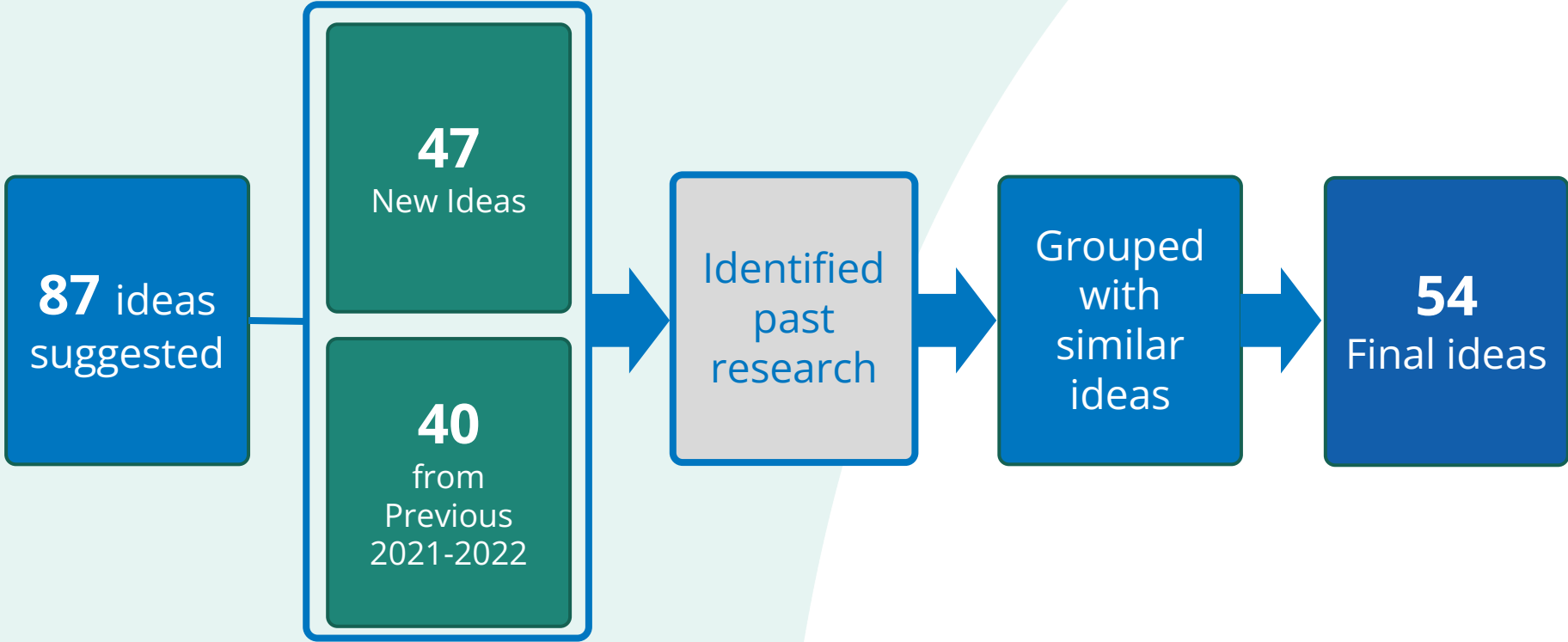
# Brainstorming at Pre-Screening Board Meetings

- 12 Meetings
- 10 Locations
- 150+ Participants


Mtg	Date	District	Attendees	Location
1	4-Oct	All	Maint	St. Cloud
2	5-Oct	8	County	Montevideo
3	9-Oct	M	County	Roseville
4	10-Oct	7/8	City	Redwood Falls
5	11-Oct	6	City	Rochester
6	16-Oct	3	County	Waite Park
7	16-Oct	M	City	Shoreview
8	17-Oct	3	City	Waite Park
9	17-Oct	M	Maint	Golden Valley
10	18-Oct	7	County	Kasota
11	18-Oct	1	City	Virtual
12	23-Oct	1	County	Carlton



# Process to Reduce the Number of Ideas



# Survey Sent to Cities and Counties



Minnesota  
Local Road  
Research Board

**Category**  
[Click any research idea to see full details](#)  
 Use the arrows to adjust vote count

Remaining Votes 18 Submit »

If you submit now, you can return later.

Bridge and Structures (5) -

- 0 ↕ Load Posting Implements of Husbandry and Emergency Vehicles for Minnesota's Local Bridge Inventory
- 0 ↕ High Performance Concrete: Why do Cylinders Continue to Break?
- 0 ↕ Cost of Precast Concrete Structures Escalating and Delayed Supply
- 0 ↕ Precast vs. Cast in Place culverts
- 0 ↕ Bridge Maintenance - partnership with MnDOT

Construction/Materials (1) +

Maintenance Operations (24) +

Materials and Construction (6) +

Pavement (1) +

Policy and Planning (15) +

Traffic and Safety (9) +

**Full Details**

**Load Posting Implements of Husbandry and Emergency Vehicles for Minnesota's Local Bridge Inventory**

AMC hosted a working group on IOH and there was a recent conference (Alexandria) on IOH. With approximately 15,000 local bridges, developing a representative screening approach for Minnesota's local bridge owners is needed to assure IOH vehicles are properly and consistently evaluated and load posted. Additionally, educational outreach materials are needed for farmers and bridge owners.

District	City	County	Total
1	2	8	<b>10</b>
2	0	7	<b>7</b>
3	4	8	<b>12</b>
4	3	10	<b>13</b>
M	26	11	<b>37</b>
6	7	9	<b>16</b>
7	3	8	<b>11</b>
8	1	7	<b>8</b>
<b>Total</b>	<b>46</b>	<b>8</b>	<b>114</b>

1st

- **Wayne Sandberg** (Washington)

20th

- **Joe Meemken** (Isanti)

24th

- **Justin Bergerson** (Isanti)



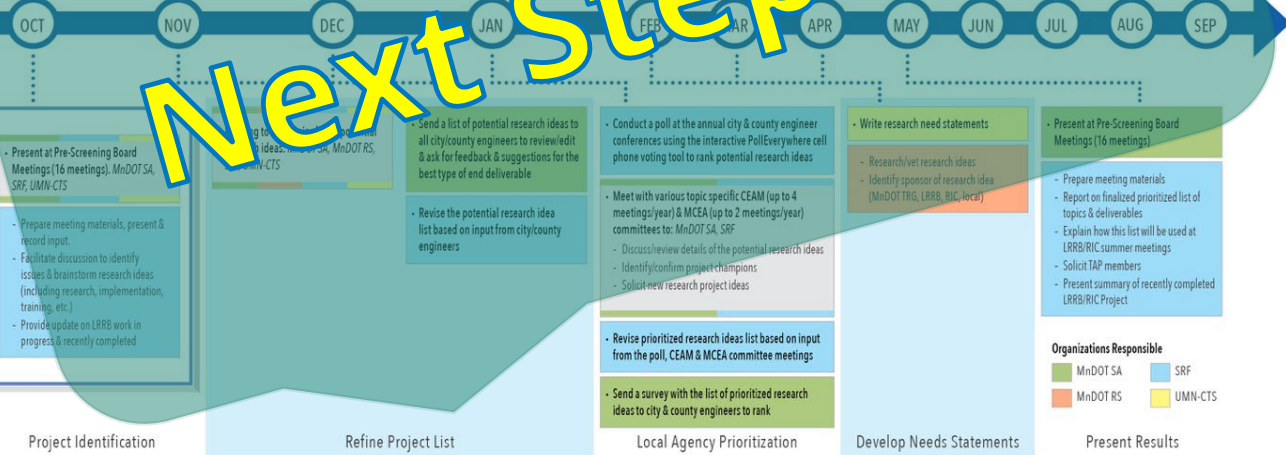
## 2024 Winners

# Voting Results

Rank	Total	City	Cnty	SA	CategoryName	ItemName
1	113	34	78	1	Maintenance & Operations	Patching and Crack Filling Best Practices
2	105	69	31	5	Traffic & Safety	Evaluation of Driver Speeds After Implementation of Speed Limit Reduction on Urban Streets
3	103	54	47	2	Traffic & Safety	Guidance for Installation of Pedestrian Crossings
4	97	63	33	1	Environmental	Innovative Solutions for Construction Stormwater Solutions for Linear Urban Projects
5	85	32	50	3	Policy & Planning	Understanding Vehicle Miles Traveled (VMT) Reduction Expectations for Cities and Counties
6	83	17	65	1	Environmental	Environmental Permitting Requirements & Best Practices
7	81	36	45	0	Administration	Best Practices for Developing Request for Proposals (RFPs)
8	71	14	56	1	Maintenance & Operations	Drone Guidelines for Maintenance Use
9	69	3	66	0	Maintenance & Operations	How to Gather Striping Data Through the Pathways Van?
10	69	14	55	0	Administration	Effective Purchasing of Public Works Materials, Vehicles and Equipment
11	68	9	58	1	Administration	Maintenance Worker Wage Study for Commercial Operators
12	66	35	30	1	Materials & Construction	Best Practices for Turf Establishment in Drought Years
13	65	43	19	3	Policy & Planning	Guidance for Reducing Urban Street Signage
14	63	23	37	3	Environmental	Feasibility of Solar Street Lighting
15	61	34	26	1	Policy & Planning	Best Practices for Electric Vehicles Charging Stations and Public Fleet Conversion

# Voting Results

Rank	Total	City	Cnty	SA	CategoryName	ItemName
16	60	2	57	1	Bridge & Structures	Load Posting Implements of Husbandry and Emergency Vehicles for Minnesota's Local Bridge Inventory
17	58	27	29	2	Traffic & Safety	Evaluation of Roundabout Crash Rates and Effectiveness
18	57	10	47	0	Maintenance & Operations	Best Practices to Prevent Seal Coat Damage from Underbody Plow Blades
19	47	7	40	0	Maintenance & Operations	Use of Social Media or Other Apps for 511 Communication on Local Roads
20	47	8	36	3	Maintenance & Operations	Guardrail Replacement and Maintenance Guidelines (Update 2010 Resource)
21	43	17	26	0	Traffic & Safety	Best Practices for Effective Completion of Crash Reports by Law Enforcement
22	43	34	8	1	Materials & Construction	Best Practices for Storm Water Pond Dredging Projects to Minimize Quantity Disputes
23	42	14	28	0	Maintenance & Operations	Best Practices to Deter Beavers and Other Animals from Obstructing Waterways
24	38	21	16	1	Traffic & Safety	Create Roundabout Driver Education for Local Agency Use
25	38	23	14	1	Materials & Construction	Best Practices Addressing Conflicts with Private Irrigation Systems in ROW
26	38	8	30	0	Materials & Construction	Design Guidance and Best Practices for the Use of Light Fill
27	38	3	35	0	Environmental	Benefits of Voluntary Conservation Agreements for ROW Management to Improve Habitat for Threatened or Protected Species
28	36	26	7	3	Policy & Planning	Agency Guidance for Addressing Artistic/Creative Pavement Painting on Public Roads
29	36	10	26	0	Maintenance & Operations	Winter Maintenance Solutions for Challenging Areas like Hills Curves and Shaded Areas
30	33	3	30	0	Traffic & Safety	Best Practices for Facility and Employee Safety



## Research Need Statement

Date: 4/1/19

Need Statement Champion: \_\_\_\_\_

Agency: \_\_\_\_\_

Email: \_\_\_\_\_

Phone: \_\_\_\_\_

Idea Submitted by: LRRB via Priority Process (3/19/19 Mtg)

Idea Originated from: 2019 LRRB Idea Solicitation Process (Pre-Screen Board mtgs)

Select Program:

MnDOT OR  Local Road Research Board (LRRB)

Research OR  Implementation

Need Statement Title:

\_\_\_\_\_

Need Statement: Describe the problem or the opportunity. Include background and objective.

\_\_\_\_\_

Provide a summary of the potential benefits:

\_\_\_\_\_

How does this project build upon previous research (include title or reference to a completed research effort)?

\_\_\_\_\_

Provide names to consider for a technical advisory panel:

\_\_\_\_\_

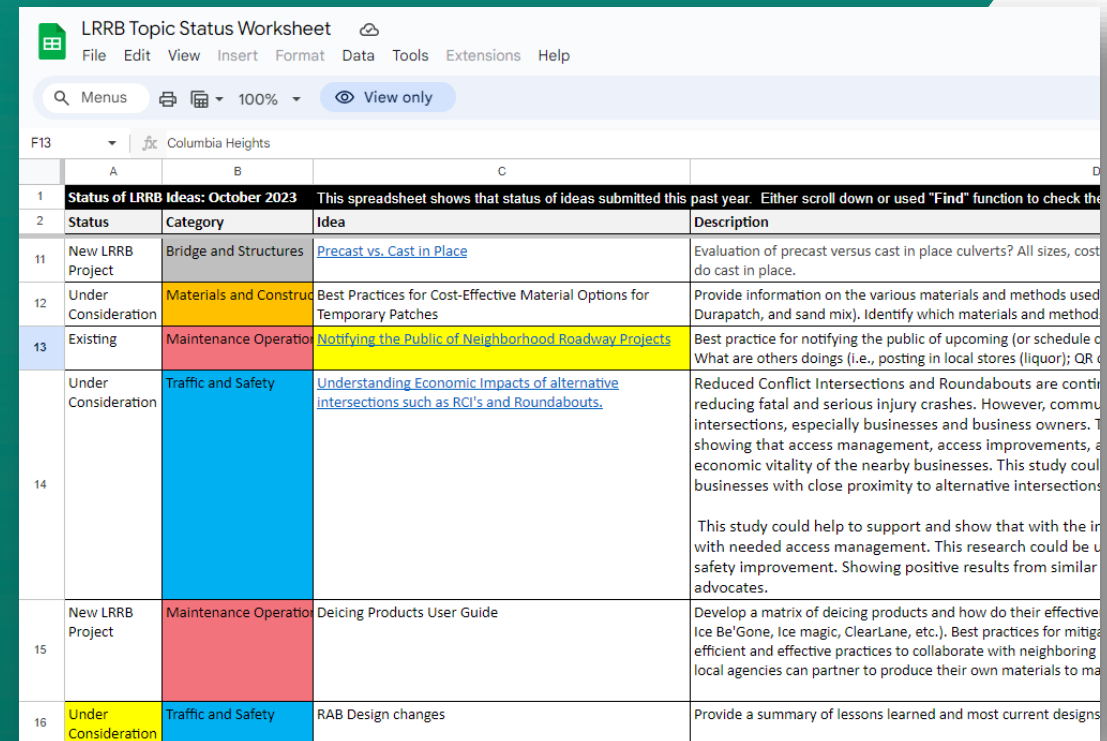
Please submit completed form to  
or  
395 John Ireland Blvd., MS 330, St. Paul, MN 55155



# What's New

# Tracking Your Research Idea

- Added LRRB Idea Tracker which indicates the status of ideas previously suggested



The screenshot shows a Google Sheet titled "LRRB Topic Status Worksheet" with a menu bar (File, Edit, View, Insert, Format, Data, Tools, Extensions, Help) and a search bar. The sheet displays a table with the following data:

	A	B	C	D
1	<b>Status of LRRB Ideas: October 2023</b> This spreadsheet shows that status of ideas submitted this past year. Either scroll down or used "Find" function to check the			
2	<b>Status</b>	<b>Category</b>	<b>Idea</b>	<b>Description</b>
11	New LRRB Project	Bridge and Structures	<a href="#">Precast vs. Cast in Place</a>	Evaluation of precast versus cast in place culverts? All sizes, cost do cast in place.
12	Under Consideration	Materials and Construct	Best Practices for Cost-Effective Material Options for Temporary Patches	Provide information on the various materials and methods used Durapatch, and sand mix). Identify which materials and method
13	Existing	Maintenance Operatio	<a href="#">Notifying the Public of Neighborhood Roadway Projects</a>	Best practice for notifying the public of upcoming (or schedule of What are others doings (i.e., posting in local stores (liquor); QR c
14	Under Consideration	Traffic and Safety	<a href="#">Understanding Economic Impacts of alternative intersections such as RCI's and Roundabouts.</a>	Reduced Conflict Intersections and Roundabouts are continuing to reduce fatal and serious injury crashes. However, community intersections, especially businesses and business owners. This study showing that access management, access improvements, and economic vitality of the nearby businesses. This study could help businesses with close proximity to alternative intersections. This study could help to support and show that with the implementation with needed access management. This research could be used for safety improvement. Showing positive results from similar advocates.
15	New LRRB Project	Maintenance Operatio	Deicing Products User Guide	Develop a matrix of deicing products and how do their effective (e.g., Ice Be'Gone, Ice magic, ClearLane, etc.). Best practices for mitigating efficient and effective practices to collaborate with neighboring local agencies can partner to produce their own materials to ma
16	Under Consideration	Traffic and Safety	RAB Design changes	Provide a summary of lessons learned and most current designs



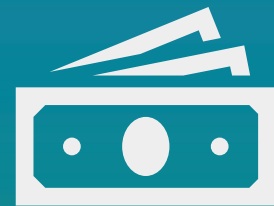
# New, Improved LRRB Website

- Redesign of the search function
- Works like a “Google” search
- Filters to narrow search results
- Available early 2024



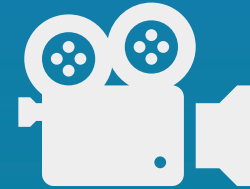
# Recruitment Videos

- Transportation career highlighting engineering, technician, and maintenance careers.
- Focused on young people (high school and middle school)
- 4, 1-minute video available in January



# New Project Funding

- 2024 project will be announced soon
- **TAP members recruitment** will begin shortly
- **VOLUNTEER!!!!!!!**





# Questions?

Michael Marti, SRF Consulting  
[mmarti@srfconsulting.com](mailto:mmarti@srfconsulting.com)